

First Issue 11/2019



## ABOUT US

**Dinel, s.r.o.** is a leading manufacturer of level and flow measurement systems in the Czech Republic. Our level meters, level sensors, and flow meters are used in many countries throughout the world in a wide range of industries, agriculture, transport, environmental technologies, etc.

We provide consulting services and training of service personnel, while also providing the opportunity to borrow the product in order to verify its function. In addition, our products are provided with an extended warranty of 3 years.

Dear Business Partners,

You're holding the first issue of our irregular news bulletin Dinel NEWS. We'd like to inform you about news we've prepared for you using this format. However, we don't want to bother you with these Dinel NEWS, so we plan to issue them only once or twice a year.

In addition to continual expansion of our product range, we're also dedicated to improving our technological equipment and thus increasing our overall flexibility. If you've been following our company for a long time, then you know that we focus on quality first and foremost. This entails not only the quality of the product itself, but also on the quality of business, technical support, service, and shipping. However, we'd love to hear how we're doing and how satisfied you are with us directly from you. Please fill out a short survey on our [website](#).

*Dalibor Štverka, General Director*

## WHERE TO VISIT US

**26 -28 Nov 2019**  
**SPS - Smart Production Solution**  
Nuremberg, Germany

**3 -6 Mar 2020**  
**Aquatherm Praha 2020**  
Prague, Czech Republic

**17 -20 Mar 2020**  
**AMPER 2020**  
Brno, Czech Republic

**31 Mar - 4 Apr 2020**  
**TECHAGRO**  
Brno, Czech Republic



## NEW PRODUCT OF THE YEAR SMART CAPACITIVE LEVEL METER CLM-70

A new product line of CLM-70 capacitive level meters with a display for showing measured data and HART<sup>®</sup> communication. It is intended for continuous level measurement of liquids and solid materials in all industrial branches.



Capacitive level meter CLM-70

### Basic Characteristics:

- A wide range of applications, direct installation in hoppers, silos, sumps, tanks, etc.
- Measured data in real time on the display (OLED or LCD).
- Current output 4–20 mA with digital two-way HART<sup>®</sup> communication.
- Setting the parameters and copying the configuration between level meters using the display module.
- As compared with reflective level meters (ultrasonic, radar), measurements are taken along the entire electrode length (no dead zones at the beginning and end of the electrode). Therefore, it can also be used in smaller tanks.
- Contrary to radar level meters, it measures substances with extremely low dielectric constants ( $\epsilon_r > 1.1$ ).

Read more about level meter CLM-70 [here](#).

## HYDROSTATIC LEVEL METER HLM-35N WITH SETTING USING A MAGNETIC PEN

The HLM-35 level meter has undergone two major changes this year; first, the range has been extended with variations **having a stainless steel diaphragm**. Compared to the ceramic diaphragm, it has greater resistance to shocks and pressure surges. However, it is somewhat less resistant to corrosion.

The second, more substantial innovation is the **possibility of settings using a magnetic pen**. The HLM-35 can be set by touching with a magnetic pen, in a way similar to the capacitive level meter DLM-35. The setting can be done within the limits of the basic range. It is necessary to specify the basic range in the order code.

### Basic Characteristics:

- Installation in tank bottom, side wall, or drain pipeline.
- The hydrostatic pressure of the liquid is corrected by atmospheric pressure which is brought into the sensor by a capillary in the cable or by a gas-permeable valve on the sensor head.
- It can also be used as a pressure gauge (for relative pressure) for general applications with a maximum pressure of 10 bar.

Read about level meter HLM-35 [here](#).



Hydrostatic level meter HLM-35  
and magnetic pen for setting

## FLEXI WATCH A NEW LOOK FOR MEDUSA

Surely you must have encountered our level sensor FLD-48 called "Medusa". After 10 years we decided to let the Medusa swim away and now we have designed a completely new thru-wall level sensor FLD-32 "Flexi Watch".



*Dual fastening of FLD-32 using self-adhesive layer and attachment bands*

### Basic Characteristics:

- For limit sensing of liquid levels in non-conductive tanks (through a non-conductive wall of a vessel or pipeline).
- The sensor is equipped with high-frequency technology, enabling reliable function even with adhering conductive media.
- Miniature design in a flexible housing can be installed even on slightly curved surfaces.
- To be attached a self-adhesive layer or special fastening bands are used.
- Configuration and setting by "programming" wire or a magnetic pen.
- LED status indication.

Read more about Flexi Watch [here](#).



*FLD-32 "Flexi Watch"*

## TFS-35 THERMAL FLOW SENSOR WITH A LONGER STEM ON SALE

For limit and continuous sensing of liquid media flow rates and temperature monitoring, newly with optional stem lengths of 20 and 50 mm.

### Basic Characteristics:

- The sensors are designed for being mounted into pipelines where flow and temperature monitoring are carried out.
- LEDs for status display.
- It is possible to choose either 1× current output 4...20 mA and 1× limit PNP output or 2 limit PNP outputs.
- Settings are done using a magnetic pen.
- Stainless steel housing.

More info about TFS-35 [here](#).



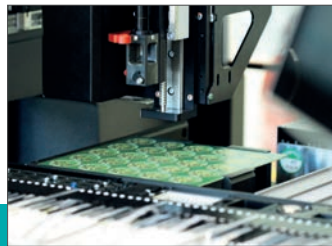
*TFS-35 with longer stem*

Check out our complete offer at [www.dinel.cz](http://www.dinel.cz)

## In 2019 we did much more – here is a small summary of the most important things:

- High-frequency limit level sensor **RFLS-35** in design N is now available also with **elongated electrodes**.
- It is now possible for the smart level meters with a display to choose a **DM-70** with LCD and backlight, which is perfectly **legible – even outdoors**.
- On our website, **3D models** in STEP (.stp) format are available in the "Downloads" section, allowing us to make the work easier for design engineers.
- We have expanded our production technology with a **new SMT workstation** with an automatic pick and place machine, steam soldering, and automatic optical inspection.
- We have also introduced a more efficient system for recording and evaluating faults and defects of repaired products. It is directly linked to the development process and thus enables further improvement of the quality and reliability of our products.

More info at: [www.dinel.cz](http://www.dinel.cz)



**Dinel, s.r.o.**  
U Tescomy 249  
760 01 Zlín  
Czech Republic

phone: +420 577 002 003  
e-mail: [sale@dinel.cz](mailto:sale@dinel.cz)

[www.dinel.cz](http://www.dinel.cz)

