



## NEWS FROM OUR COMPANY

**Dinel**, brings you another overview of news in this form. If you are interested in a product - use the QR codes linking to our website [www.dinel.cz](http://www.dinel.cz), where you can find detailed information about each product or you can send us directly even a non-binding inquiry. We look forward to seeing you this year personally. A list of planned trade fairs can be found at the end of this NEWS. Stop by at our stand where you will be able to see all our new products and have a live chat about anything that interests you.



our first universal pressure gauge



## WHAT PRODUCTS CAN BE FOUND AT IN THIS NEWS

### PRESSURE SENSOR

New PPM-35

### CONTINUOUS LEVEL METERS

DLM-35-25 and DLM-35-52

### RADAR LEVEL METER

GRLM-70 „MIRANDA“ with new functions

### LIMIT LEVEL SENSORS

High frequency level sensors RFLS-28/35 with diagnostics

### EVALUATION AND POWER SUPPLY UNITS

DSU-1222-A, SSU-1212-D, SSU-1212-AD and TDU-1222

# OUR NEWS...

## PRESSURE SENSOR PPM-35

This is a universal electronic pressure gauge. It is a compact sensor containing a stainless steel strain gauge sensor and evaluation electronics in an all stainless steel housing. It is designed to measure both gaseous and liquid substances in all industries. A wide range of different process connections, threaded and threadless, are available for both relative and absolute pressure measurements. Versions for higher media temperatures up to 200 °C are also available. A choice of electrical connections is also possible, e.g. valve ISO connector, M12 connector or hardwired cable, and the type of output - current (4 - 20 mA) or voltage (0 - 10 V). The maximum measuring range of the sensor is 100 bar and the basic accuracy is 0.5% of the range.

- Pressure measurement of gaseous or liquid substances
- Easy assembly, wide range of process connections
- Stainless steel housing and diaphragm material
- Very good long-term stability
- Basic accuracy 0,5% of range
- Measuring range up to 100 bar
- Electrical connection via hard cable, M12 connector or ISO connector



## CAPACITIVE LEVEL SENSORS DLM/S-35-25

Rod capacitive level sensors for liquid level measurement.

- This variant is particularly suitable for high temperature applications in combination with water (hot water, steam)
- Higher pressure resistance at high temperatures compared to other level gauge variants
- Increased resistance to vapour and gas diffusion
- Also suitable for aggressive liquids



## CAPACITIVE LEVEL SENSORS DLM/S-35-52

New rope capacitive level sensors for liquid level measurement.

- Variant suitable for electrically conductive liquids with a maximum electrode length of up to 10 m
- Also suitable for aggressive liquids
- Insulated rope electrode, FEP material, insulated weight



## RADAR LEVEL METERS GRLM-70 „MIRANDA“

GRLM-70 is our flagship guided wave radar level meter, but it has received several innovations and new designs that are definitely worth mentioning.

- Measuring the interface of two different media and measuring the thickness of the upper media layer
- Adaptive Teaching to counter false reflections under changing conditions



## HIGH-FREQUENCY LEVEL SENSORS RFLS-28/35 WITH DIAGNOSTICS

High frequency limit level sensors with elimination of deposits and foam on the electrode. This type of sensor RFLS-28\_--PD\_ has built-in diagnostics in its firmware that can be used to monitor the internal integrity of the sensor. An evaluation unit is used to evaluate the diagnostic modes SSU-1212-D (AD).

- NEW FG and FN variants with front thread
- RG, RN - Installation with pipe extension in tanks, vessels or sumps
- Resistant to adhesion of viscous and adhering media (ketchups, yoghurts, spreads, syrups, creams, pastes, cleaning agents, etc.)



## POWER SUPPLY AND SWITCHING UNITS

The latest news is the expansion of our existing range of evaluation and power supply units, by adding units DSU-1222-A, SSU-1212-D, SSU-1212-AD a TDU-1222. Other units that were already on offer remained functionally the same, but received completely new electronics.

### DSU-1222-A

dual channel power supply and evaluation unit for flexi watch sensors. Allows remote parameterization of sensor connections. Includes LC (level control) function

### SSU-1212-D

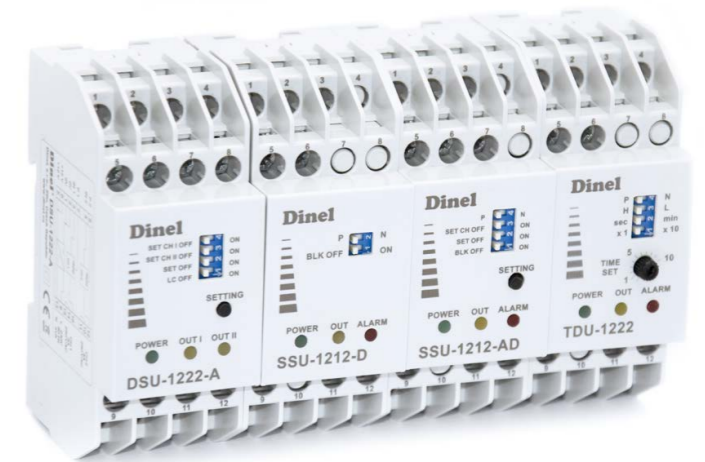
single-channel unit designed for sensors with diagnostic function (RFLS-35, RFLS-28). The diagnostic function monitors the correct function and settings of the connected sensor. Use for safety applications

### SSU-1212-AD

single-channel unit designed for sensors with diagnostic function (RFLS-35, RFLS-28). The diagnostic function monitors the correct function and settings of the connected sensor. Extended with a remote parametrization function. Use for safety applications

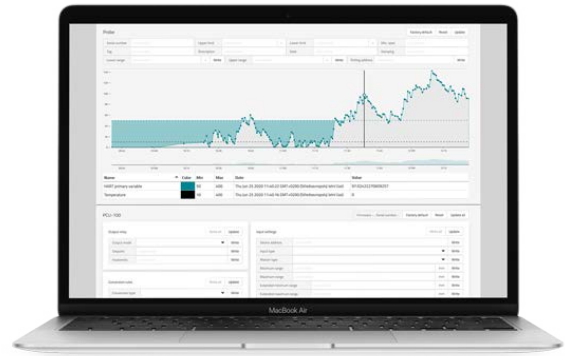
### TDU-1222

timing unit for level control using one limit sensor. Supplemented by the possibility of connecting an emergency sensor



## UNISCADA

This software is used to display data measured by sensors. Using the UniSCADA application, values can be read and set in both the sensor itself and the PCU-100 unit. The application is free to download on our website, [www.dinel.cz](http://www.dinel.cz), in the **Download** section, and is compatible with Windows 10 and 7. The advantage of the UniSCADA software is that it was, and continues to be, developed by our company. Thanks to this, we can optimise it for our devices as well as adapt it to our customers' specific requirements.



UniSCADA application

## WE ALSO HAVE A PRODUCT CATALOGUE ONLINE



## WHERE YOU CAN VISIT US THIS YEAR

DE

17 - 21 April  
**HANNOVER MESSE**  
Home of Industrial Pioneers  
Hannover, Germany

DE

14 - 16 November  
**SPS - SMART PRODUCTION SOLUTIONS**  
32nd international exhibition for  
industrial automation  
Nuremberg, Germany

CZ

23 - 25 May  
**WATER SUPPLIES-SEWERAGE**  
22nd International Water Management  
Exhibition  
Prague, Czech Republic

Dinel, s.r.o.

U Tescomy 249, 760 01 Zlín | Czech Republic  
Phone: +420 577 002 003 | e-mail: [sale@dinel.cz](mailto:sale@dinel.cz)

 [facebook.com/dinel.electronic](https://facebook.com/dinel.electronic)

[www.dinel.cz](http://www.dinel.cz)

